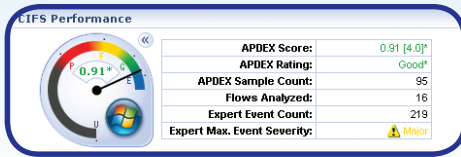


# OmniPeek® Enterprise

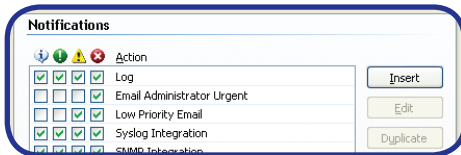
## Enterprise Network Analyzer and OmniEngine Console



Application Performance Dashboard



Total Network Visibility



Expert Notifications



Monitor Critical Network Services

### WildPackets' solutions enable businesses to

- Gain unprecedented visibility into networks and applications
- Accelerate find-to-fix times
- Discover and close network security gaps
- Increase end user productivity
- Increase ROI on existing networks and applications
- Increase IT efficiency and responsiveness
- Reduce costs associated with network downtime and service degradation
- Reduce IT labor costs

### OmniPeek Enterprise

Serving a dual role as both a portable network analysis solution and as a software console for OmniEngines, OmniPeek Enterprise offers an intuitive, easy-to-use graphical interface that engineers can use to rapidly analyze and troubleshoot enterprise networks. OmniPeek Enterprise provides centralized Expert analysis for all networks under management. Using OmniPeek's intuitive user interface and "top-down" approach to visualizing network conditions, network engineers can quickly analyze faults from multiple network segments, drill down through multiple layers of analysis, and pinpoint problems that need correction.

Using OmniPeek Enterprise, network engineers can:

- Analyze traffic from any local network segment, including 10GbE, Gigabit, WAN, and wireless segments, as well as any network segment configured with an OmniEngine
- Analyze and troubleshoot both data and media traffic using one single product
- Monitor networks with high-level network views, or "Dashboards," and instantly drill down to see which traffic characteristics are affecting network performance
- Capture and analyze data from multiple local network adapters, multiple distributed OmniEngines, or any combination of local and remote data
- Leverage your existing wireless network infrastructure by turning managed access points from Cisco or Aruba, and IDS/IPS wireless sensors from AirTight Networks, into packet capture devices and collect data from multiple channels simultaneously
- Add reports of wireless interference sources into OmniPeek's Summary Statistics, and set triggers on reported interference to troubleshoot interference problems as they occur

- Rely on real-time Expert analysis to do the heavy-lifting, performing analysis of all network traffic and reporting Expert events as they occur
- Receive alerts when specific Expert events occur, or when configured Network Policies are violated
- Change filters on the fly without having to stop and restart packet captures
- View packet-stream based analytics by conversation pair, instantly locating network events
- View web traffic, the most common data type on the network, in conversational flows based on client, server, web pages or webrequests
- Ensure Voice and Video Service quality by providing detailed data and visual displays of VoIP signalling, VoIP call quality and Video signal quality
- View network traffic in its intended form like PDF, HTML pages, Email, IM, etc.

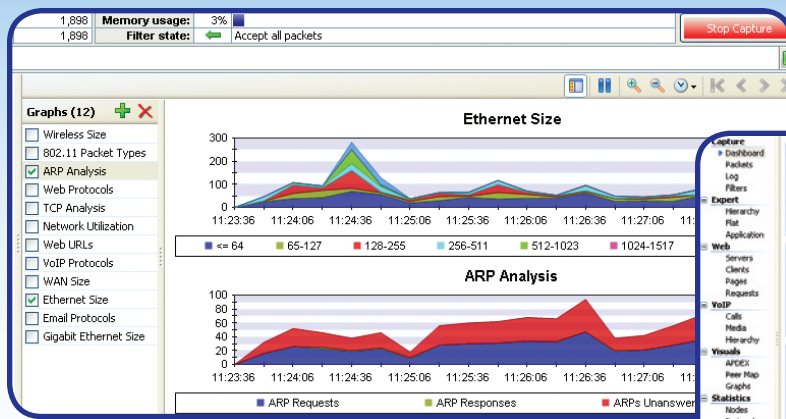
### Unique Flexibility

Of all standalone network analysis products available today, only OmniPeek Enterprise enables network engineers to monitor multiple parts of the network simultaneously – an important capability when engineers know there's a problem but don't know where it is.

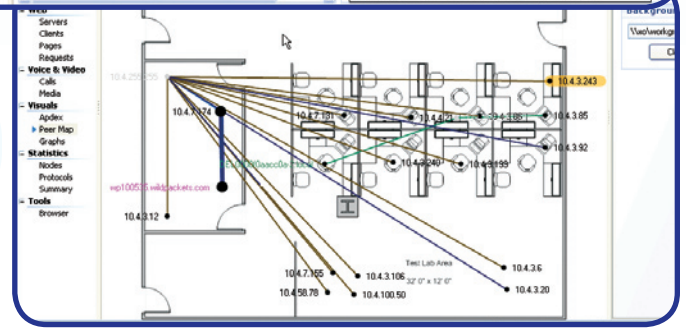
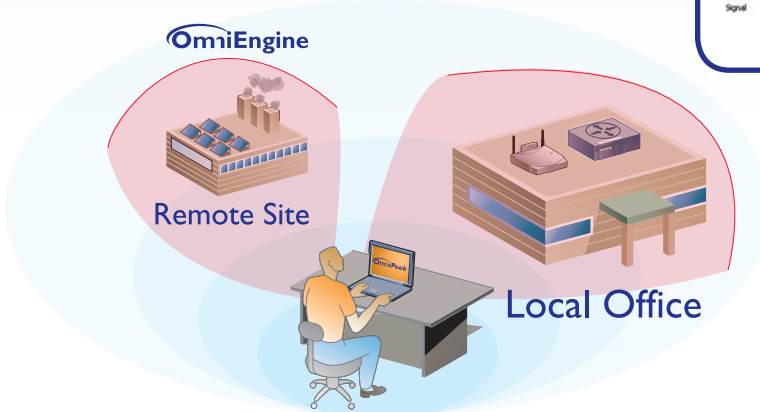
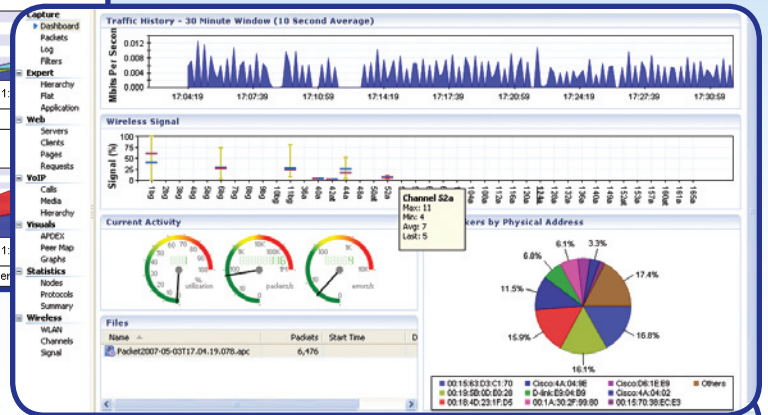
### Visual Expert

The Visual Expert answers the question "Who's talking to who?" by providing comprehensive visual data about network, media and application traffic, along with expert diagnoses of common and not-so-common network problems. The Visual Expert makes it easier to understand what's happening on the network and how to remedy problems by providing a "top-down" view of network activity.

Visual Expert includes Packet Visualizer, payload reconstruction, a wide range of conversation-oriented graphs, optimization tuning by playing "what If"



Visual reports, graphs and dashboard views have been added and enhanced throughout OmniPeek.



The Peer Map in OmniPeek provides a unique visual summary of communicating nodes, including the volume and traffic pair for each node and node pair.

Capturing either locally or at a remote site, OmniPeek provides powerful tools for troubleshooting and performance analysis.

with key network parameters, packet by packet comparison between multiple saved capture files - very useful in comparing the traffic from the wireless and wired side of an access point, and a detailed summary panel.

### Expert Analysis

OmniPeek displays Expert System diagnoses by conversation pair, so you can instantly identify where problems are occurring on the network.

### Voice and Video Analysis

To deploy and maintain a successful Voice and Video over IP implementation, you need to be able to analyze and troubleshoot media traffic and the network the media traffic is running on, simultaneously. You need to be able to understand how other applications are affecting media traffic – and vice versa.

OmniPeek Enterprise provides users with the visibility and analysis they

need in order to keep Voice and Video applications and non-media applications running optimally on the network. Users gain access to a wealth of detailed call quality statistics, graphical representations of the media traffic and detailed diagnostic information. Specific voice and video media and signaling, and call playback capabilities are also included.

### On-the-Fly Filters

You shouldn't have to stop your analysis to change what you're looking at. OmniPeek Enterprise enables you to create filters and apply them immediately. The WildPackets "select related" feature selects the packets relevant to a particular node, protocol, conversation, or expert diagnosis, with a simple right click of the mouse. Features like this significantly reduce time needed to find and fix problems. Similar operations often take a dozen or more steps in other analyzers.

### Global Real-Time Troubleshooting

OmniPeek Enterprise extends real-time troubleshooting to network segments around the world, delivering Expert network analysis, detailed node, protocol, and network summary statistics, and even packet decoding, on multiple segments, by multiple users, in real time. From one application, a network engineer can cost-effectively troubleshoot locally or connect to OmniEngine Expert analysis or other applications running on OmniEngines down the hall, across the country, or around the globe.

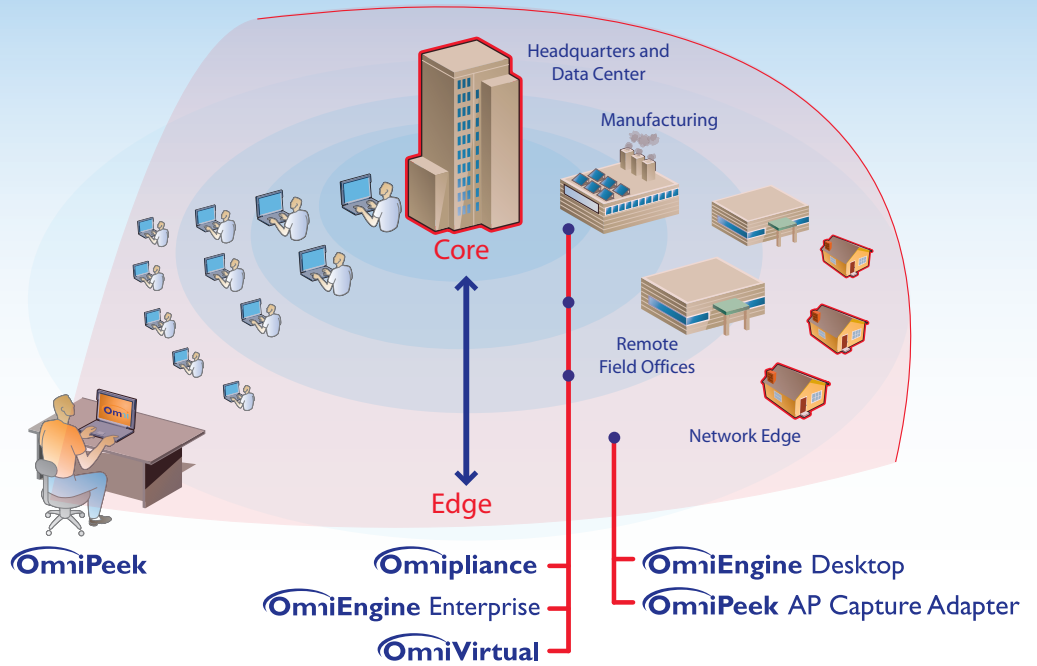
### Top-Down View

OmniPeek Enterprise provides a high-level view of network traffic using its comprehensive Dashboard view. Dashboards display important data that every network engineer needs to know about the network without spending lots of time analyzing the captured data.

With OmniPeek Enterprise, you can also drill down and see which nodes your top talkers are talking to. Click again and see what protocols and sub protocols are in use. IT staff of all levels of technical ability can view this information instantly, anywhere on the network. OmniPeek Enterprise also provides a wide range of reports in various output formats to keep executives informed of overall network performance.

### Network Coverage

With the Ethernet, full-duplex Gigabit, 10GbE, WAN, and wireless capabilities, you can now effectively monitor and troubleshoot services running on your entire network. Using the same solution for troubleshooting wired and wireless networks reduces the total cost of ownership, and illuminates network problems which would otherwise be difficult to detect.



Distributed analysis allows visibility into the entire network including Virtual Hosted Services and remote locations.

### WildPackets OmniPeek Product Family

The OmniPeek Product Family gives network engineers real-time visibility into every part of the network – simultaneously from a single interface – including Gigabit, 10GbE, Ethernet, 802.11 wireless, VoIP, and WAN links to remote offices. Using OmniPeek’s local capture capabilities, centralized console, distributed engines, and Expert analysis, engineers can rapidly troubleshoot faults and fix problems, restoring essential services and maximizing network uptime and user satisfaction.

The OmniPeek Product Family comprises OmniPeek network analyzers and consoles, as well as distributed OmniEngines, which analyze data at remote locations on the network. With its open APIs and a growing family of plug-ins, OmniPeek is uniquely designed to meet the ever-changing needs of network engineers responsible for wired and wireless networks and applications such as VoIP, Video over IP and VoWiFi.

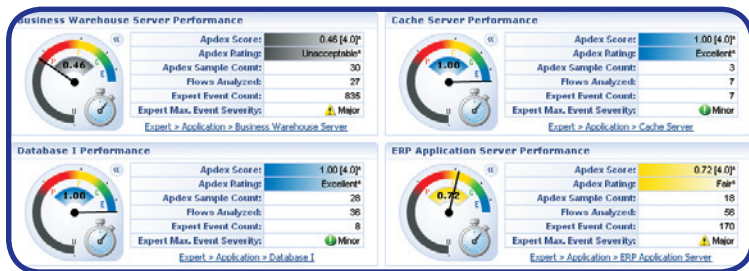
OmniPeek is the only commercially available wireless network analysis solution selected by the Wi-Fi Alliance (WFA) for



use in the recently announced 802.11n interoperability testing.

### About WildPackets, Inc.

WildPackets, Inc., founded in 1990, develops network and application analysis solutions that enable organizations of all sizes to analyze, troubleshoot, optimize, and secure their wired and wireless networks. WildPackets has amassed more than 6,000 customers and its products are sold in over 60 countries in all industrial sectors. Customers include Safeway, Boeing, Siemens, AT&T, Motorola and over 80% of the Fortune 1000. For further information, please visit [www.wildpackets.com](http://www.wildpackets.com).



The APDEX dashboard displays user satisfaction scores for the applications on your network.

Copyright © 2007 WildPackets, Inc. All rights reserved. WildPackets, the WildPackets logo and OmniPeek are registered trademarks and OmniEngine is a trademark of WildPackets, Inc. All other product names and trademarks are the property of their respective companies.



1340 Treat Blvd, Suite 500  
Walnut Creek, CA 94597  
(925)937-3200  
fax (925)937-3211

[www.wildpackets.com](http://www.wildpackets.com)