

# Omnpliance

Distributed Network Analysis Recorder  
Running Windows or Linux



## WildPackets solutions enable businesses to

- Gain unprecedented visibility into networks and applications
- Accelerate find-to-fix times
- Discover and close network security gaps
- Increase end user productivity
- Increase ROI on existing networks and applications
- Increase IT efficiency and responsiveness
- Reduce costs associated with network downtime and service degradation
- Reduce IT labor costs



The Omnpliance features an LCD and keypad for entering Ethernet port configurations.

**WildPackets**<sup>®</sup>  
Illuminate Your Network™

## The Challenge

Enterprises and service providers depend on reliable network performance. Configuration errors, network faults, and security attacks can jeopardize operations—and the corporate bottom line. To keep networks performing optimally, engineers need to be able to troubleshoot problems wherever they occur on the network, as quickly as possible. They need real-time packet capture and analysis for every type of network segment—10/100, Gigabit, 10 Gigabit, WAN and WLAN—and for every level of network traffic, including spikes in usage. These analysis capabilities must be available 24/7 in an easy-to-deploy, easy-to-use solution.

## Distributed Network Recorder

The WildPackets Omnpliance is a turn-key hardware and software solution that gives network engineers unprecedented, real-time and post-capture visibility into remote network segments. Each Omnpliance network appliance runs WildPackets' OmniEngine and sends real-time analytics and monitoring results to a central OmniPeek console.

The Omnpliance is an ideal data recorder for network forensics applications, such as incident response operations, policy compliance investigations, and transaction analysis.

The Omnpliance is designed for rapid, convenient deployment. The system can be installed, configured, and online in under an hour. An LCD and keypad on the front panel enable network engineers to enter configuration information such as IP addresses without the use of a keyboard or monitor.

The Omnpliance is available in two OS configurations:

- The Omnpliance Windows comes with OmniEngine Enterprise software and the Microsoft Windows 2003 Server already configured.
- The Omnpliance Linux comes with OmniEngine Linux and the Red Hat Enterprise ES v4.0 already configured.

The Omnpliance makes it easy for organizations to deploy the WildPackets solution at every network location in an enterprise. By installing Omnpliances in data centers and wiring closets, network engineers gain immediate real-time visibility into local and remote network segments – without any lengthy or costly network reconfigurations or upgrades.

## Omnpliance Configurations

The Omnpliance 2t and Omnpliance 6t are 3U appliances built specifically for distributed capture and analysis.

### Omnpliance 2t Configuration

- WildPackets OmniEngine Enterprise software or OmniEngine Linux software
- Two Dual-Core Intel Xeon processor 5160 (3.0Ghz)
- Four 500G SATA Drives, RAID 0 (2TB total disk space)
- 80GB SATA Drive (non-RAID) for OS
- LCD Display and keypad
- CD-ROM and floppy drive
- Two PCI-Express x8 Slots and one PCI-Express x4 Slot
- Three PCI-X expansion slots (2x133MHZ and 1x100MHZ)
- 2GB RAM
- Two built-in 10/100/1000 Ethernet ports
- Microsoft Windows Server 2003, Standard Edition, Service Pack 1 or Red Hat Enterprise ES version 4.0

### Omnpliance 6t Configuration

- WildPackets OmniEngine Enterprise software or OmniEngine Linux software
- Two Dual-Core Intel Xeon processor 5160 (3.0Ghz)
- Eight 750G SATA Drives, RAID 0 (6TB total disk space)
- 80GB SATA Drive (non-RAID) for OS
- LCD Display and keypad
- CD-ROM and floppy drive
- Two PCI-Express x8 Slots and one PCI-Express x4 Slot
- Three PCI-X expansion slots (2x133MHZ and 1x100MHZ)
- 2GB RAM
- Two built-in 10/100/1000 Ethernet ports
- Microsoft Windows Server 2003, Standard Edition, Service Pack 1 or Red Hat Enterprise ES version 4.0

## OmniEngine Software

Building on WildPackets' award-winning network analysis technology, OmniEngine performs real-time network analysis on traffic from one or more network interfaces, including Ethernet, 802.11 a/b/g/n wireless, Gigabit, 10 Gigabit, and WAN. OmniEngine captures and analyzes data in real-time, and records data for post-capture analysis.

Benefiting from WildPackets' optimized data management capabilities, the Omnpliance boasts a capacity for sustained packet capture and writing to disk that is unmatched in the industry.

## Built-in Network Adapters

The Omnpliance ships with two built-in network adapters: two 10/100/1000 Gigabit Ethernet NICs. These adapters are available for packet capture and analysis or can be used as dedicated management ports.

## Gigabit Analyzer Cards (GACs)

WildPackets Gigabit Analyzer Cards (GAC) use state-of-the-art hardware and FPGA (field-programmable gate array) technology to provide high-performance analysis for Gigabit networks. Each WildPackets GAC collects, classifies, and merges data in real time at 100% line rate under all network traffic conditions. FPGA technology enables the GAC to perform on-board filtering, packet-slicing, and time-stamping.

Each GAC supports Windows Plug-and-Play functionality, enabling the Omnpliance to automatically configure the card at installation.

The GAC is a PCI-X card that supports up to 2 full-duplex or 4 half-duplex

connections. Taking advantage of a PCI-X bus that clocks up to 133 MHz, the GAC provides high-performance connectivity for monitoring and troubleshooting Gigabit networks.

A GAC can be configured during manufacturing to support multiple configurations of SX, LX, ZX or copper (10/100/1000 B-T).

### XL-4 Adapter

- Consists of 4 ports SFP cages

### XL- 4T Adapter

- Consists of 4 ports of RJ45 10/100/1000 Base-T

### XL 2+2T Adapter

- Consists of 2 RJ45 10/100/1000 Base-T and 2 SFP cages

### DAG4.5G4 Adapter

- Available with 1000Base-SX or 1000Base-LX Optical Ethernet or 1000Base-T Ethernet using modular transceivers

## 10 Gigabit Analyzer Cards

WildPackets' 10 Gigabit Analyzer card is a high performance, one-port adapter that has been optimized for monitoring and inspecting traffic on 10 Gigabit Ethernet network.

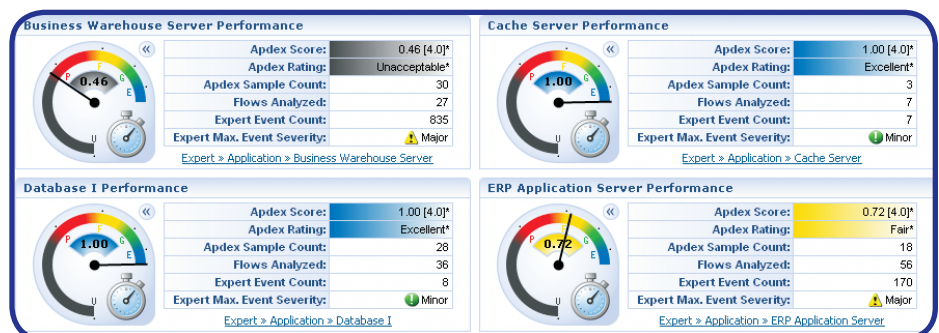
### DAG5.2X

- One-port, PCI-X 10G Analyzer Card available with 1x850nm MFF XFP or; 1x1310nm SMF XFP optical transceivers with LC connectors.

### DAG8.2X

- One-port, PCI Express 10G Analyzer Card

The Apdex dashboard displays user satisfaction scores for the applications on your network. Find out more about Apdex reporting at [www.apdex.org](http://www.apdex.org)



## Other Gigabit and 10 Gigabit Network Adapters

### Intel® Pro/1000 GT Quad Port Server Adapter

- The Intel® PRO/1000 GT Quad Port Server Adapter is a 10/100/1000 NIC that is available for additional segment coverage.

### Intel® PRO/10GbE CX4 Server Adapter

- 64 bit PCI-X interface running up to 133 MHz with 10GbE-over-copper Connection.

### Intel® PRO/10GbE SR Server Adapter

- 64 bit PCI-X interface running up to 133 MHz with 10 Gigabit Multi-mode Fiber Server Connection.

### Intel® PRO/10GbE LR Server Adapter

- 64 bit PCI-X interface running up to 133 MHz with 10 Gigabit Single-mode Fiber Server Connection.

## A Flexible, Scalable Solution for Enterprises

Through the rapid deployment of Omnipliances, a network engineering team can gain comprehensive visibility into all its network segments, even its full-duplex Gigabit segments. Once the appliances are configured—a process that takes a matter of minutes—network engineers can begin benefiting from the Omnipliance's in-depth monitoring and traffic analysis. The business results of that monitoring and analysis are compelling: improved reliability for networks and applications, tighter security, and improved user productivity.

## Included Deployment Service – Onsite or remote

Your Omnipliance includes Deployment Services which enable you to put your WildPackets solutions to work for you right away and start fully enjoying the benefits and ROI of your local or

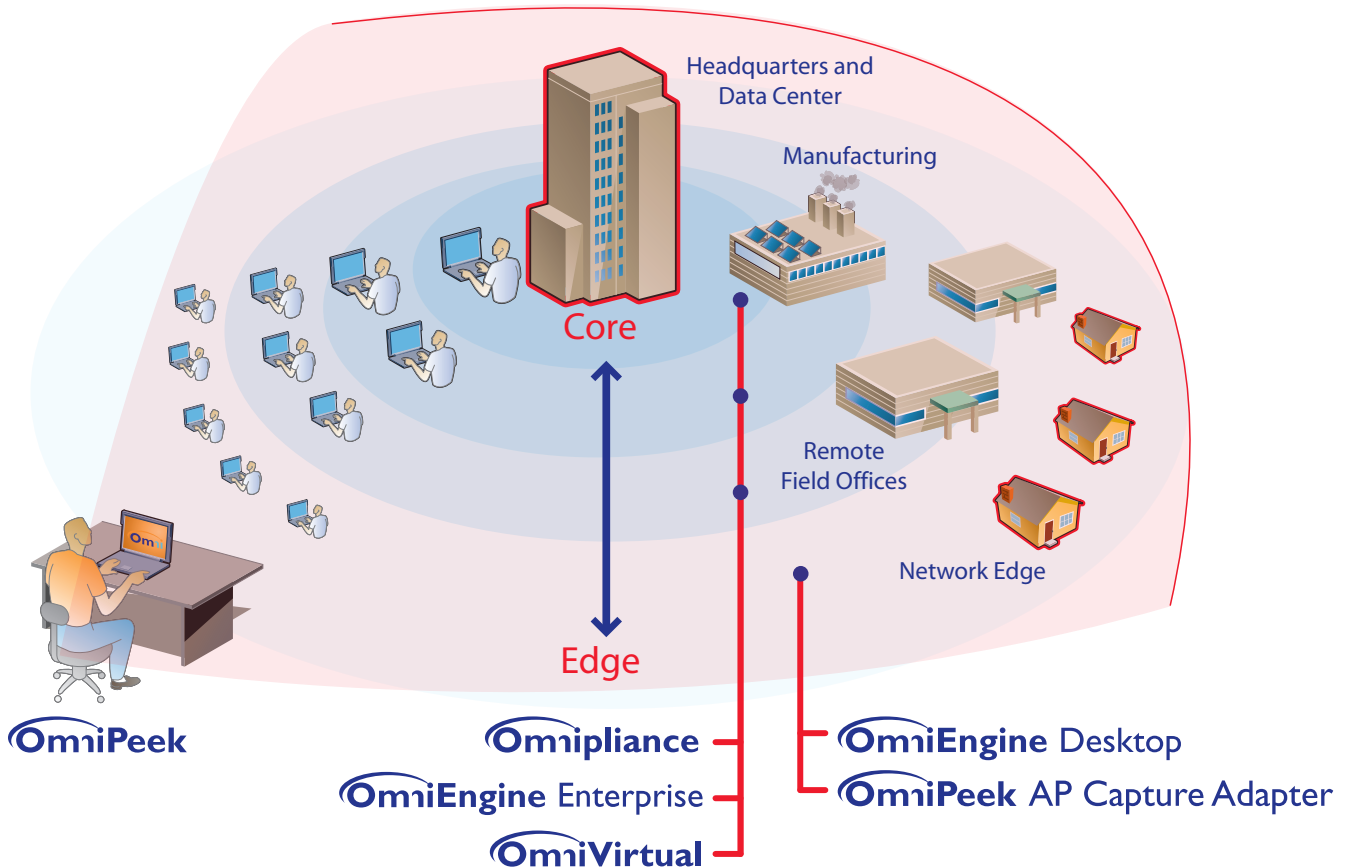
distributed analysis platform. From pre-deployment planning to personalized network configuration, we ensure that your WildPackets solution is up and running as quickly and effectively as possible for you and your business.

### Benefits

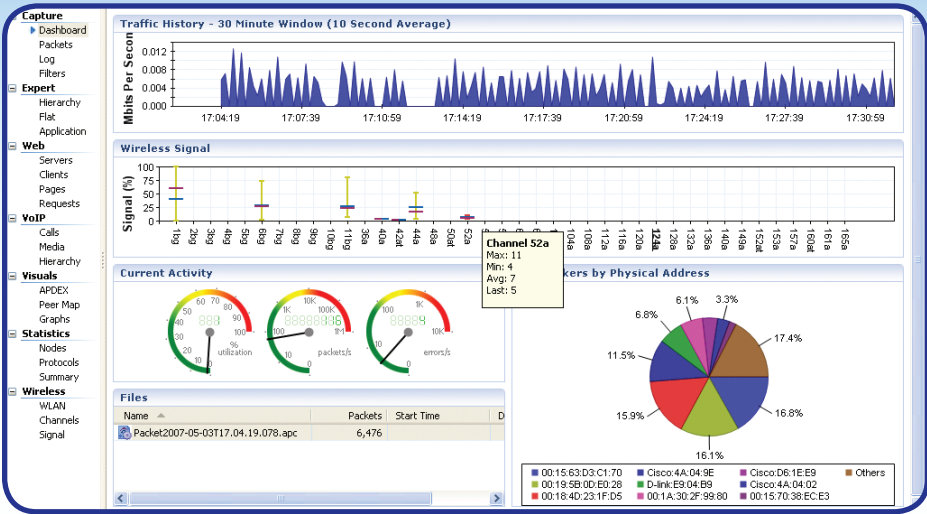
- Ease burden on in-house staff
- Expert architecture and design review
- Proven deployment best practices
- Expert knowledge transfer
- Address the problem of too much to do, too little time
- Rapid implementation

### Activities

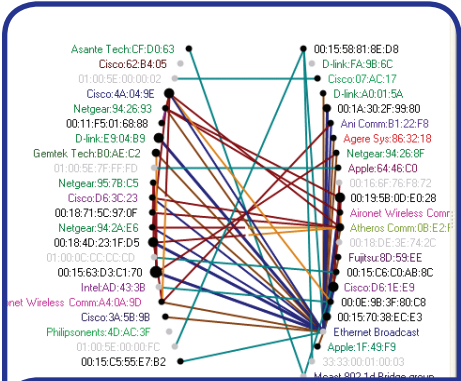
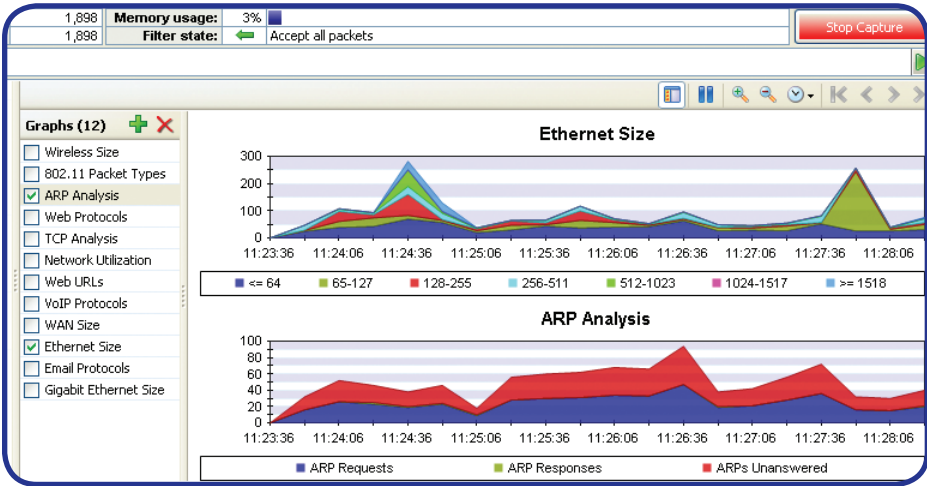
- Review environment
- Place product
- Install/ configure product
- Validate installation, expectations
- Identify obvious issues
- Create custom Graphs, Alarms, Notification, Triggers, Filters and Reports
- Hands-on best practices, Q & A, knowledge transfer



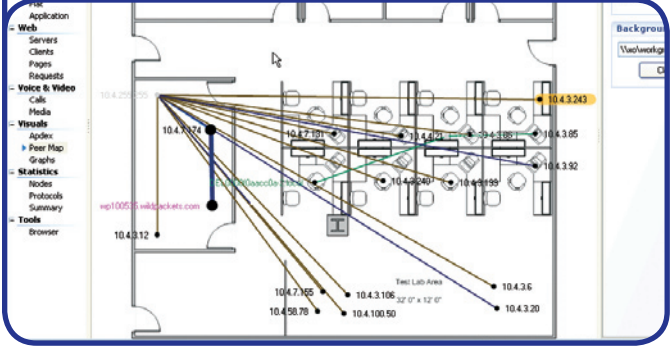
Distributed analysis allows visibility into the entire network including Virtual Hosted Services and remote locations.



Visual reports, graphs and dashboard views have been added and enhanced throughout OmniPeek.



The Peer Map in OmniPeek provides a unique visual summary of communicating nodes, including the volume and traffic type for each node and node pair.



### Remote Consulting

As part of the included deployment service, follow up is important. In addition to onsite assistance, WildPackets offers continuing IT support. For example, those who purchased and implemented deployment services now have a relationship with WildPackets. Through our interactions, there will be shared understanding of your network and business needs. Trace files can be exchanged and analyzed to monitor performance, look for trends, confirm expectations, or just troubleshoot issues that may arise. Remote consulting services can be scheduled like a check-up or available on short notice in emergencies.

For more information, contact: [wpconsulting@wildpackets.com](mailto:wpconsulting@wildpackets.com) or call 800.466.2447 and ask for Professional Services.

### About WildPackets, Inc.

WildPackets, Inc., founded in 1990, develops network and application analysis solutions that enable organizations of all sizes to analyze, troubleshoot, optimize, and secure their wired and wireless networks. WildPackets has amassed more than 6,000 customers and its products are sold in over 60 countries in all industrial sectors. Customers include Safeway, Boeing, Siemens, AT&T, Motorola and over 80% of the Fortune 1000. For further information, please visit [www.wildpackets.com](http://www.wildpackets.com).



1340 Treat Blvd, Suite 500  
Walnut Creek, CA 94597  
(925)937-3200  
fax (925)937-3211